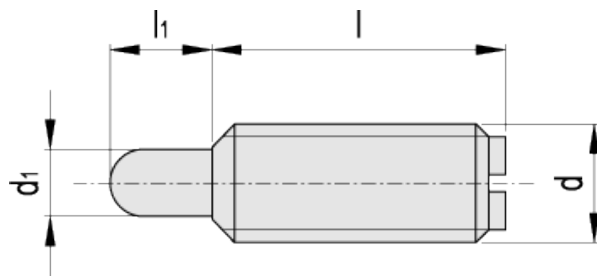


# EN 615.1

## Threaded bolt spring plungers



INCH



american unit  
metric unit

Elesa Standards			Main dimensions				Spring pressure		Weight
With locking patch	Without locking patch	Description	d	l	d <sub>1</sub>	l <sub>1</sub>	Preload [lbf] [N]	Max. load [lbf] [N]	lbs g
Code	Code								
EN.933502	EN.933501	EN 615.1-6-32-B*	6-32 -	0.37 9.5	0.04 1.1	0.06 1.6	0.5 2.2	1.5 6.7	0.002 1
EN.933504	EN.933503	EN 615.1-6-32-BS*	6-32 -	0.37 9.5	0.04 1.1	0.06 1.6	0.5 2.23	2.5 11.1	0.002 1
EN.933512	EN.933511	EN 615.1-8-32-B*	8-32 -	0.44 11.1	0.07 1.8	0.05 1.3	0.8 3.5	1.5 6.7	0.002 1
EN.933514	EN.933513	EN 615.1-8-32-BS*	8-32 -	0.44 11.1	0.07 1.8	0.05 1.3	2 8	5 20.5	0.002 1
EN.933522	EN.933521	EN 615.1-8-36-B*	8-36 -	0.44 11.1	0.07 1.7	0.05 1.3	0.7 3.5	1.5 6.7	0.002 1
EN.933524	EN.933523	EN 615.1-8-36-BS*	8-36 -	0.44 11.1	0.07 1.7	0.05 1.3	2 8	5 20.5	0.002 1
EN.933532	EN.933531	EN 615.1-10-32-B*	10-32 -	0.47 11.9	0.09 2.4	0.06 1.6	1 4.5	2.5 11.1	0.004 2
EN.933534	EN.933533	EN 615.1-10-32-BS*	10-32 -	0.47 11.9	0.09 2.4	0.06 1.6	2.6 11.6	6.3 28.1	0.004 2
EN.933542	EN.933541	EN 615.1-1/4-20-B*	1/4-20 -	0.53 13.5	0.12 3	0.08 2	1.1 4.9	3.5 15.6	0.007 3
EN.933544	EN.933543	EN 615.1-1/4-20-BS*	1/4-20 -	0.53 13.4	0.12 3	0.07 1.9	3 13.4	9.7 43.3	0.007 3

Elesa Standards			Main dimensions				Spring pressure		Weight
With locking patch	Without locking patch								
Code		Description	d	l	d <sub>1</sub>	l <sub>1</sub>	Preload [lbf] [N]	Max. load [lbf] [N]	lbs g
EN.933562	EN.933561	EN 615.1-5/16-18-B*	5/16-18 -	0.58 14.7	0.13 3.4	0.08 2.1	1 4.5	4 17.9	0.011 5
EN.933564	EN.933563	EN 615.1-5/16-18-BS*	5/16-18 -	0.58 14.7	0.13 3.4	0.08 2.1	3.8 17	13 58	0.011 5
EN.933572	EN.933571	EN 615.1-3/8-16-B*	3/8-16 -	0.63 15.9	0.19 4.7	0.11 2.8	1.5 6.7	5 20.1	0.013 6
EN.933574	EN.933573	EN 615.1-3/8-16-BS*	3/8-16 -	0.62 15.8	0.19 4.7	0.11 2.8	5 20.1	16 71.4	0.013 6
EN.933582	EN.933581	EN 615.1-1/2-13-B*	1/2-13 -	0.75 19	0.25 6.3	0.15 3.8	1.8 8	5.5 24.5	0.029 13
EN.933584	EN.933583	EN 615.1-1/2-13-BS*	1/2-13 -	0.75 19	0.25 6.3	0.15 3.8	5 22.3	22.4 100	0.029 13
EN.933592	EN.933591	EN 615.1-5/8-11-B*	5/8-11 -	1.06 27	0.31 7.9	0.22 5.5	2 8.9	8.5 38	0.064 29
EN.933594	EN.933593	EN 615.1-5/8-11-BS*	5/8-11 -	1.06 27	0.31 7.9	0.21 5.4	7 31.2	43.5 194.2	0.064 29

\*Complete the description of the standard item needed by adding /LE for plungers with nylon locking patch.

#### Threaded body

Black-oxide steel, screwdriver slotted head.

#### Standard executions

Black oxide hardened bolt, stainless steel spring.

- EN 615.1-B: normal end force.
- EN 615.1-BS: heavy end force (marked with two lines).
- EN 615.1-B/LE: normal end force with locking patch.
- EN 615.1-BS/LE: heavy end force with locking patch (marked with two lines).

Nylon locking patch for applications subject to vibrations or to eliminate the need for check nuts. Not recommended for applications in soft materials. Countersink the mating thread at least .030 to .045 larger than the major diameter of the plunger to make its insertion easier.

